



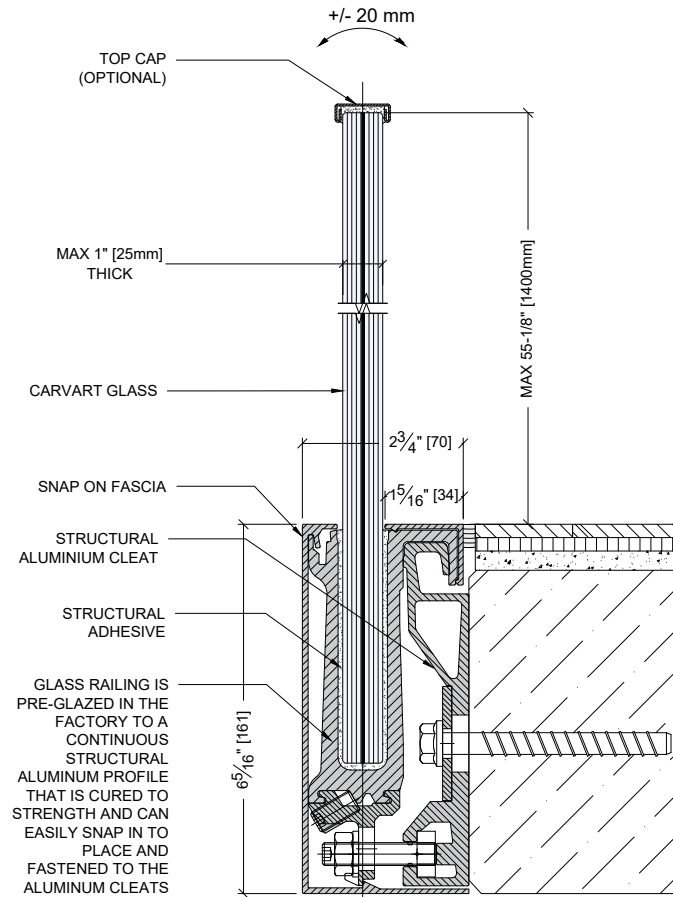
CARVART's new innovative interior and exterior glassRAILING system features a **completely flush, structurally glazed** product that **conceals all attachment methods**. With **no visible hardware**, the glass provides **elegant** and **seamless** lines.

**Structural interlayer** and **specialty glass** with **color, texture** and **pattern** give a high level of stability while providing flexibility for **creativity**.

The system is **pre-glazed to hardware** for **easy site installation**.

# glassRAILINGS > Uni (Side Mount)

GR-RAIL-UN



## Specifications

### glassRAILINGS > Uni

CARVART's innovative railing system features a pre-glazed unit that arrives on site ready to install. This frameless look can be concealed beneath a finished floor or mounted to expose a finish fascia.

### APPLICATIONS —

Railings/balustrade (interior and exterior), enclosure cladding, staircases

### HARDWARE —

Concealed structural aluminum cleats at wall anchored to client-supplied substrate are pre-installed prior to installation of the glass railing.

Glass railing is pre-glazed in the factory to a continuous structural aluminum profile that is cured to strength and can easily snap in to place and fastened to the aluminum cleats.

### HARDWARE FINISHES —

- Satin anodized
- RAL Colors

### MOUNTING OPTIONS —

- Concealed (top mounted)
- Side Exposed with Butressed Top Mounted Support
- Side Mounted (shown here)

### GLASS THICKNESS —

- Tempered laminated:
- Maximum 1" [25mm]

### WARRANTY —

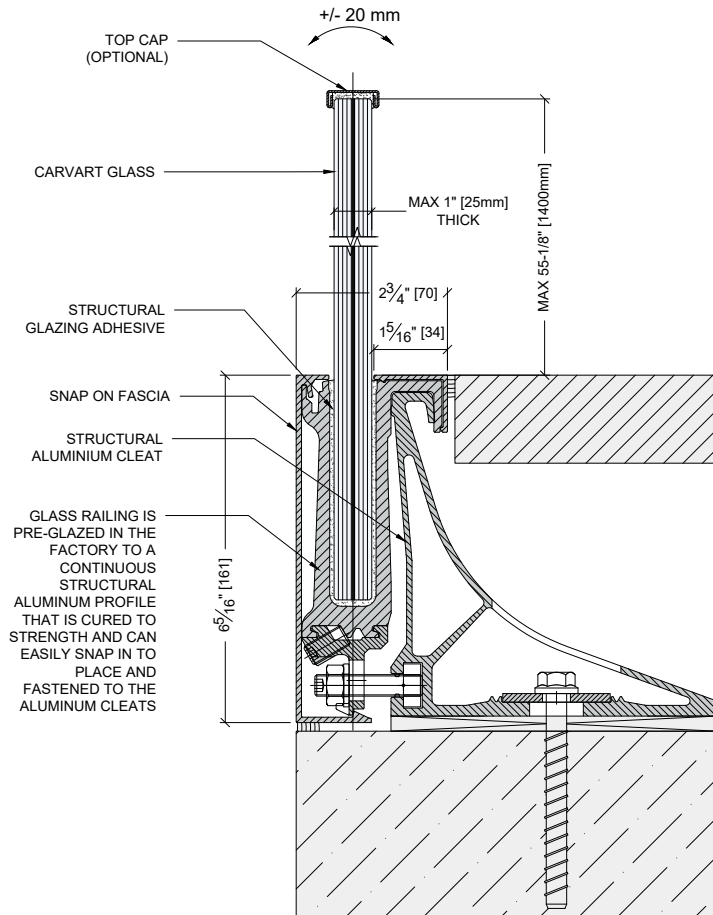
1 Year Limited Warranty

Specification Code: **GR-RAIL-UN**

<b>GR</b>	<b>RAIL</b>	<b>UN</b>
LINE	TYPE	MODEL/ID

# glassRAILINGS > Uni (Top Mount)

GR-RAIL-UN



## Specifications

### glassRAILINGS > Uni

CARVART's innovative railing system features a pre-glazed unit that arrives on site ready to install. This frameless look can be concealed beneath a finished floor or mounted to expose a finish fascia.

### APPLICATIONS —

Railings/balustrade (interior and exterior), guardrails.

### HARDWARE —

Pre-glazed unit (continuous aluminum profile adhered to glass in factory) that mounts to several different structural aluminum cleat options.

### HARDWARE FINISHES —

- Satin anodized
- RAL Colors

### MOUNTING OPTIONS —

- Concealed (top mounted)
- Side Exposed with Butressed Top Mounted Support (shown here)
- Side Mounted

### GLASS THICKNESS —

- Tempered laminated:
- Maximum 1" [25mm]

### WARRANTY —

1 Year Limited Warranty

Specification Code: **GR-RAIL-UN**

<b>GR</b>	<b>RAIL</b>	<b>UN</b>
LINE	TYPE	MODEL/ID