



Specifications

integraGLASS > A (CB_INTGR-A)

The integraGLASS > A series sink module with Multiconsole > A is an all-in-one solution that incorporates all necessary commercial bathroom services into one unit that is easy to install and aesthetically superior to other sink units. The Multiconsole > A features a prefabricated unit with dryer, soap dispenser and faucet included in one housing that is easy to install and even easier to remove (secured with a tamper-proof fastener) and maintain. The minimal 3/8" thick shelf dispenses air, soap and water without additional fixtures to clutter the sink area. The LED back-lit mirror has LED indicators to show where the dryer, soap dispenser and faucet are below the shelf.

VALUE-ADDED BENEFITS

- Non-porous materials maintain hygienic environments
- Single, double and triple positions available
- Minimal look with blade-like shelf containing sink services
- System durability and long-term integrity
- Turnkey project services
- Steel carriers available for self-supported installation
- ADA-compliant and accessibility-sensitive products

APPLICATIONS

Commercial shower enclosures and bathrooms in airports, offices, entertainment venues, sports clubs/facilities, gyms/spas, administrative buildings, hospitality.

CONFIGURATIONS

Single, double and triple basins available as standard. More positions as single unit available upon request.

FUNCTION

All-in-one sink basin, mirror and services (dryer, soap dispenser and faucet).

MATERIAL

Tempered back-painted glass

MULTICONSOLE > A DIMENSIONS

Exposed Thickness: 1/2"
Width: 2' - 2-5/16"
Height: 7-1/4"
Shelf Depth: 4-3/4"

SINK BASIN DIMENSIONS

Depth: 1' - 9-11/16"
Thickness @ front: 9/16"
Single Position Width: 27-9/16"
Double Position Width: 55-1/8"
Triple Position Width: 82-11/16"

MIRROR DIMENSIONS

Depth from finish wall:
Single Position Width: 27-9/16"
Double Position Width: 55-1/8"
Triple Position Width: 82-11/16"
Height: 37-7/16"

**Custom sizes available*

***Custom LED indicators available*

SINK BASIN MOUNTING

Floor-mounted steel carriers are available upon request to make the integraGLASS > A free-standing and self supported without the need to mount to substrate reinforcement.

MULTICONSOLE > A MOUNTING

Steel housing of Multiconsole > A must be mounted to the rear side of the finished partition. Exposed portion of Multiconsole > A unit to be installed from front after finish wall installation is complete.

MIRROR MOUNTING

CARVART supplies Z-Clips to be mounted to finish wall behind mirror. Client responsible for providing adequate blocking to support full mirror weight after installed on Z-Clips.

SOAP OPTIONS

Standard soap refill options is tamper-proof cap at front of Multiconsole>A.

***Optional remote basin with 1.3 - 6.6 gal capacity*

UL LISTING

Certificate Number: 20171117-E493638
Report Ref.: E493638-20170929
Issue Date: 2017-November-17

Issued to: SOEMA srl
36 Via Paolo Soprani
62019 Recanati MC Italy

Certified Parts: Plumbing Accessories
Commercial Hand-washing and
drying unit/electronic multi-func-
tion hand washing unit

Model No.: Multiconsole A

Standard for safety: UL 1951 Electronic Plumb-
ing Accessories CAN/CSA-C22.2 No. 68-09
Motor-Operated Appliances (Household and Com-
mercial) CSA C22.2 No. 14-13 Industrial Control

HARDWARE WARRANTY

1-year limited warranty.

For more info, contact CARVART
Sales Advisory Team at quotes@carvart.com
or call us at 212 675 0030.



integraGLASS > A

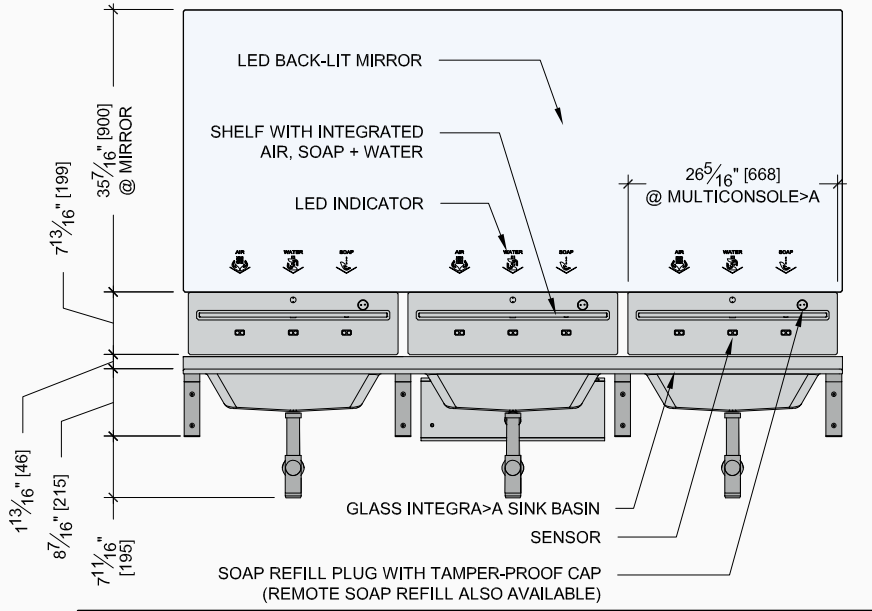
The Integra series features the a version show here (integraGLASS > A) that can be back-painted with a selection of RAL colors and can be configured with surface-mounted fixtures like the SPACE C-E shown here.



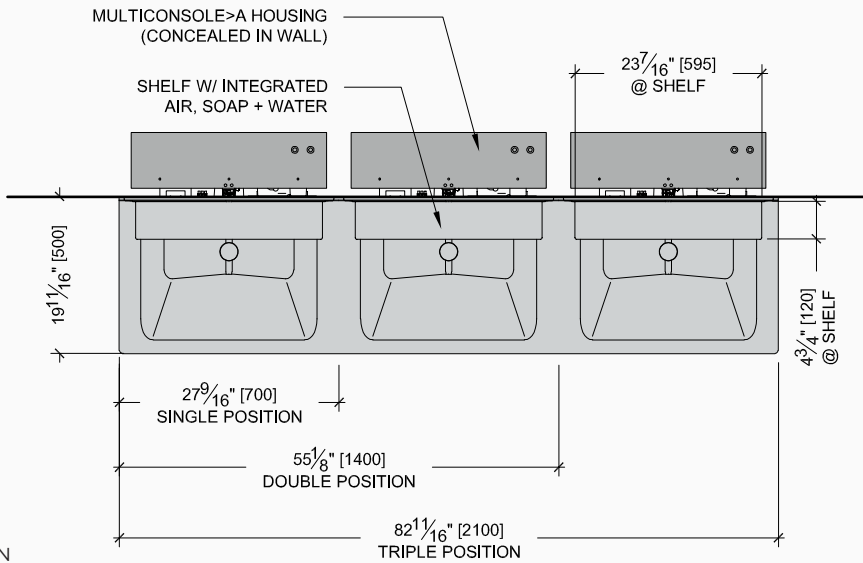
integraGLASS > A

Back-painted white with polished drain pipes and support brackets (Multiconsole shown here no longer available).

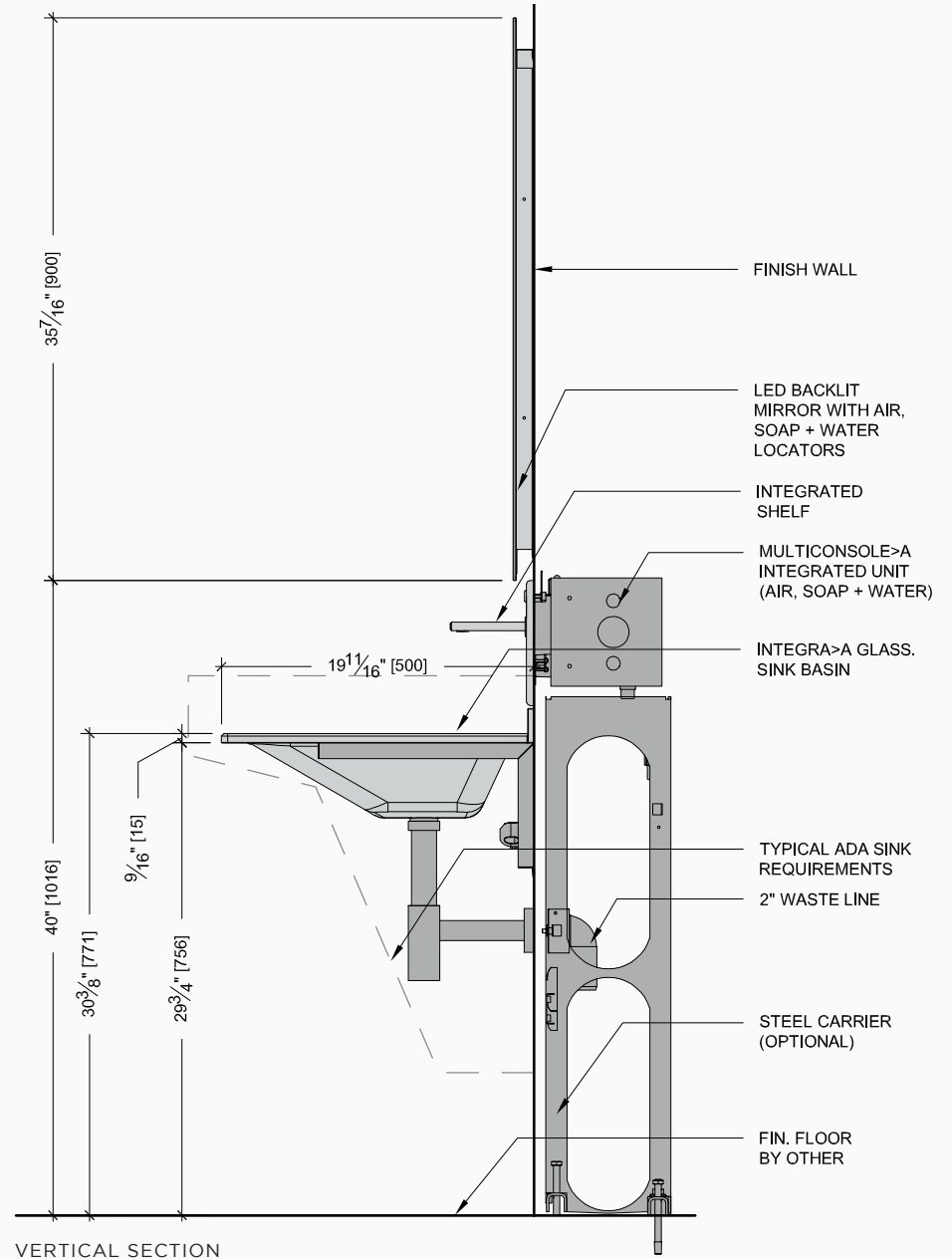
integraGLASS>A



ELEVATION



PLAN



VERTICAL SECTION

FIXTURE OPTIONS

GLASS FACE PLATE



POLISHED METAL FACE PLATE



SURFACE MOUNTED FIXTURES



CARVART®

BY

SOEMA®

Handcrafted  Technology